



STFX
UNIVERSITY




COADY
INSTITUTE

An Introduction to Asset-Based & Community-Led Development



Dr. Wellington Sousa
Jess Popp

Objectives:

-  Learn the key differences between asset-based and needs-based approaches in community work
-  Understand how the questions we ask influence our approach to community development.
-  Give you an opportunity to situate your work and reflect on ways to move toward asset-based and community-led development.



Our
Hiking
Today





**Toward
Community-
Led
Development**

**Needs versus
Assets**

**Give Your Best
Pitch**

A stylized illustration of a mountain landscape. In the center, a wooden signpost with two horizontal planks reads "Give Your Best Pitch" in white, bold, sans-serif font. The background features large, orange-brown mountains with white, wavy lines representing waterfalls or snow. The sky is a light teal color with soft, yellowish clouds. In the foreground, there are green hills with a winding path, small trees with red and orange leaves, and a larger tree with red leaves on the left. A green leaf with a yellow arrow is visible in the top right corner.

**Give Your Best
Pitch**



**Needs
versus
Assets**



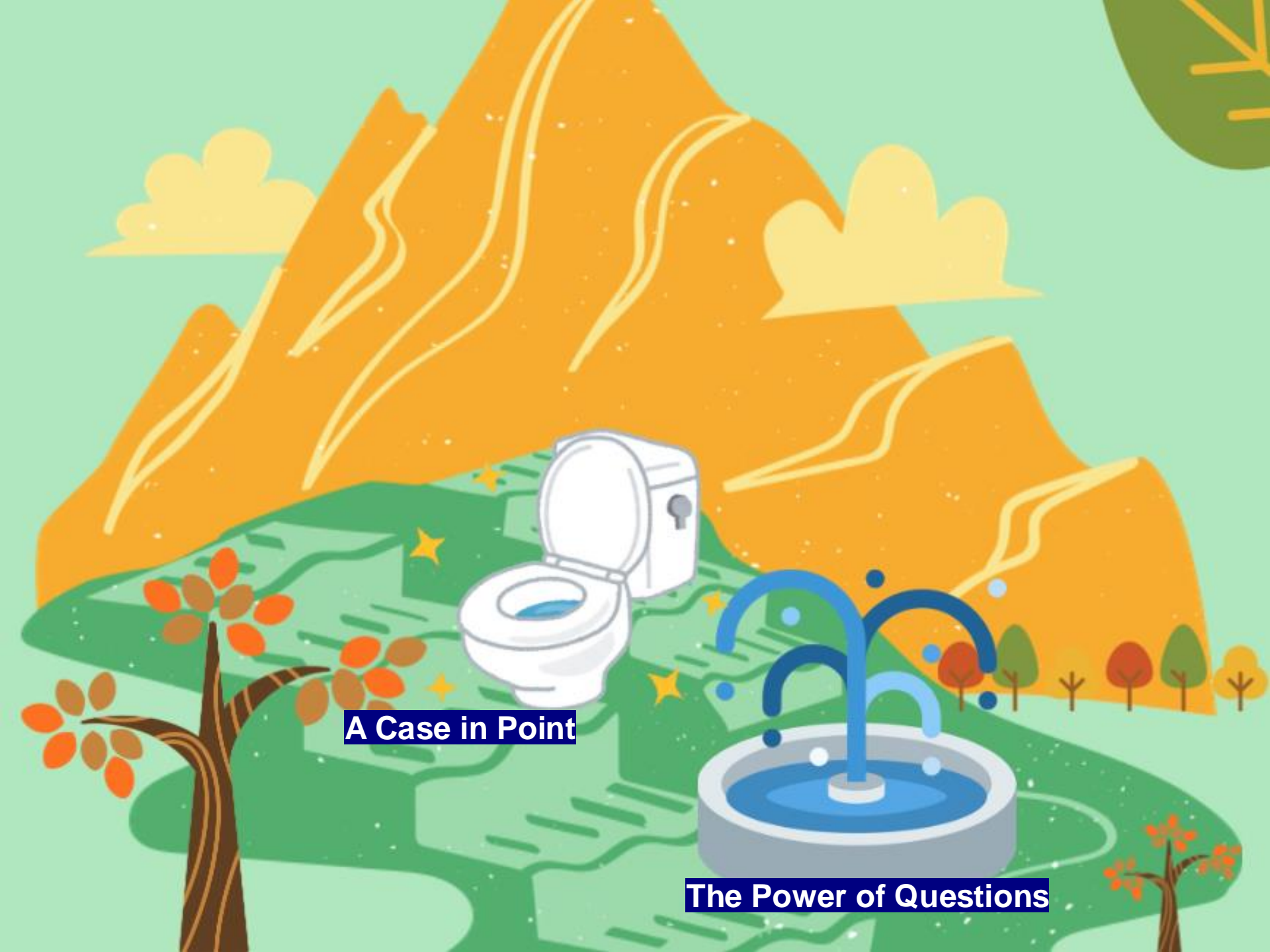
Service Delivery

- Focus on needs and respond to problems
- Programs and service delivery orientation
- Emphasis on credentials and external agencies leading the process
- Funding is based on categories of needs, and money is directed to institutions filling the needs.
- People are clients, consumers, customers



ABCD

- Focus on assets and build from opportunities
- Emphasizes relationships, citizen strengths, and community associations leading the process
- Funding and strategic partnerships enhance community capacities and efforts
- Investment
- People are viewed as citizens, community members, and neighbors



A Case in Point

The Power of Questions



Questions:

Spark and direct attention, energy and effort

What happens when people come together to make things better in their community?

- The contribution of residents
- The capacities and other resources of associations
- The community-building support of local institutions
- The built and natural environments of local places
- Economic and other forms of exchange
- Stories, shared heritage, and cultural diversity

(Adam et al., 2004, p. 107)

(Russel & McKnight, 2022, p. 55)



A Case in Point



**Toward
Community-Led
Development**

Community-Led Approaches

Community Owned	Community Driven	Community Shaped	Community Informed
<p>Local visions for change are defined and implemented by the community, who are in control of all resources, parameters and decisions.</p>	<p>Local visions for change are created in partnership with community members and organizations, who share resources and collaborate to set parameters and make decisions.</p>	<p>Local visions for change are defined by the community within a set of parameters that provided by an organization to achieve shared goals.</p>	<p>Visions for change are adapted to suit the local context through community consultation.</p>

Community-Led

Organization-Led



Stay in Touch

Dr. Wellington Sousa

WSOUSA@STFX.CA

Jess Popp

JPOPP@STFX.CA

